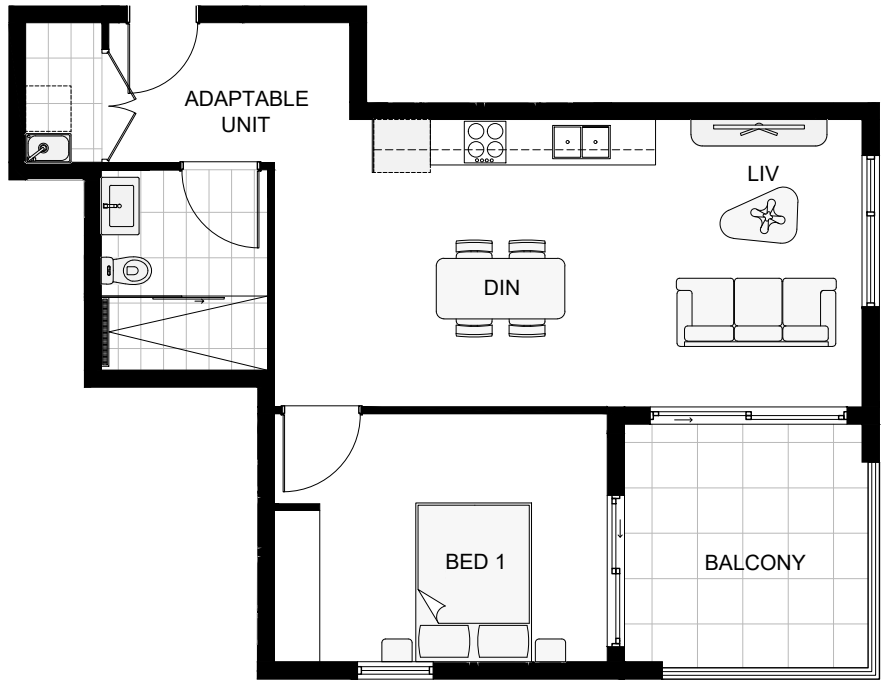


UNIT	PT	LEVEL
A1902	146	19
A2002	154	20
A2102	162	21
A2202	170	22
A2302	178	23
A2402	186	24
A2502	194	25
A2602	202	26
A2802	218	28
A2902	226	29
A3002	234	30
A3102	242	31



# THE HOXTON

LIVERPOOL

N.6 GILLESPIE STREET

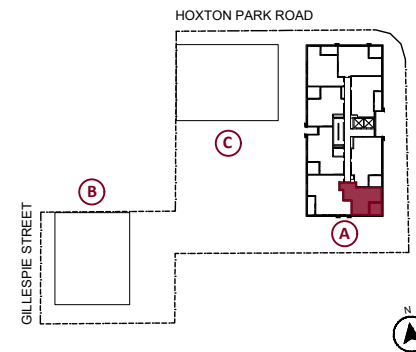
## TOWER A UNIT TYPE A11



### AREA

INTERNAL AREA:	57	m2
EXTERNAL AREA:	10	m2
TOTAL AREA:	67	m2

### LOCATION PLAN



**Disclaimer:** This plan is for marketing purposes only, is not to scale, and will not form part of any contract for the sale of the property. The plan was produced prior to construction, and any dimensions, areas, fittings, finishes and specifications referred to in the plan are subject to change without notice. The sale of the property will exclude any furniture and furnishings depicted in the plan, and the positioning of any furniture and furnishings in the plan cannot be relied upon as an indication of the final positioning of any power points, TV connection points and the like. For details of the inclusions in the sale, prospective buyers should refer to the Schedule of Finishes and other provisions expressly stated in the contract for sale. All graphics, including but not limited to tile layout and balustrades, are indicative only. Bulkheads for services are not depicted.

MARKETING FLOOR PLAN

REV: A

